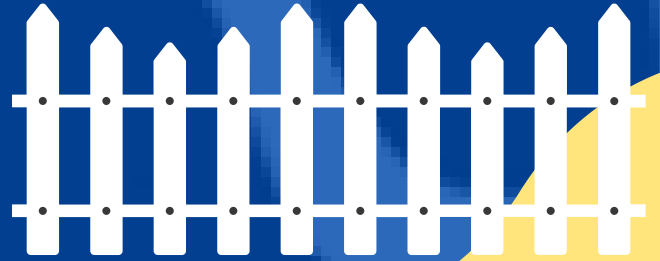


School Working Bee

WAIOTAKE VALLEY
SCHOOL

'Many hands
make light
work'



With the winter months upon us, let's spend a few hours giving our school grounds some much needed TLC.

What is
there to
do?

Repair driveway fence

Trim and tidy garden shrubs and flax bushes around school

Spray around top field playground and big blue slide

Weed, dig over and fertilise the school vege gardens ready for spring planting

Man-power to help remove old resources from school buildings and playground.



If you think you could help in any of the above areas, we would love to see you. Light refreshments will be provided.

Date: Sunday 9th June 2024

Time: 9:00am-11:00am